



Free Library of Philadelphia



Philadelphia Art Museum



Grey Tower Castle (Arcadia U.)

What do these three buildings have in common?

They're all in Philadelphia and they were all designed by Architect Horace Trumbauer.

These buildings and many others of his design are icons in our lives. And yet, even the work of a great artist like Horace Trumbauer is not immune to Demolition.



Another Philadelphia Trumbauer gem, Whitemarsh Hall, the mansion of Edward T. Stotesbury in Wyndmoor, Pa. was demolished in 1980.

In the face of total demolition, wouldn't it be great to save his work? Someone did!

Coming next week:

More details about saving an important example of Horace Trumbauer's work.

The story is about a vestibule in a mansion designed by Horace Trumbauer, which was not only saved, but carefully deconstructed and laboriously reconstructed in an addition that was intentionally designed and constructed to receive this great work.

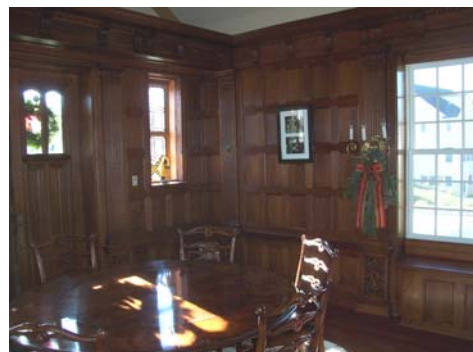
We will tell you the story of how this entire original Trumbauer room went safely from

this



to

this ...



... and the people who made it happen.